



MOTOMESH 1.0.1

Quick Start Installation Guide for MeshManager®

System Requirements

MiSC Disk Space	Initial MeshManager installation requires at least 14.5 MB of disk space.
QDMA Transceiver Firmware Version	8.0.64
QDMA Host Firmware Version	8.1.2.13
Red Hat Enterprise Linux ES	v.3.0 Update 3
802.11 AP Firmware Version	2.0.64
Java 2	Java JRE version 1.4.x.x must be installed in: /usr/local/java/bin/java.
MySQL Database Server	The 4.0.13 version of the MySQL database server should be installed in: /usr/local/mysql/bin/mysql .

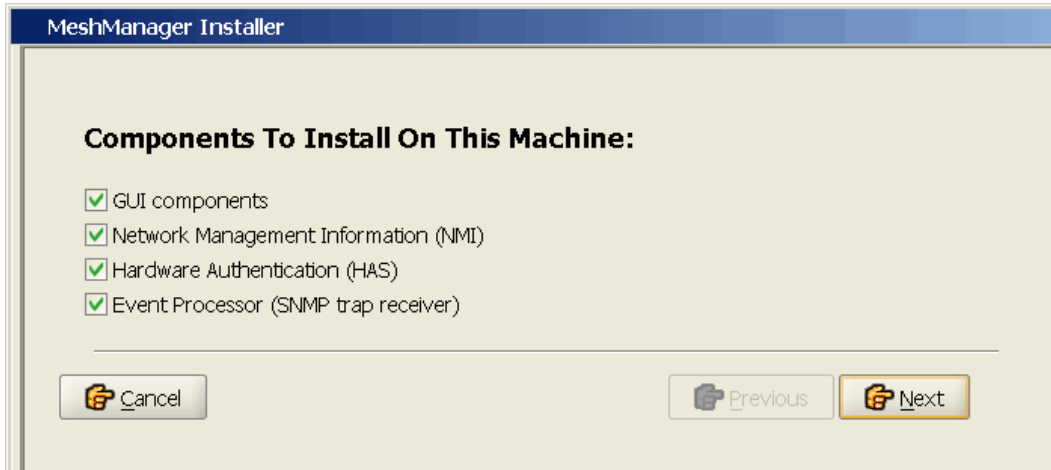
Installation of the MeshManager Software

To install a new MeshManager version X.Y.Z that is distributed on CD, perform the following steps.

Insert the CD into the CDROM drive.	
If the File Manager does not appear: \$ mount /mnt/cdrom \$ ls -l /mnt/cdrom	Make sure the CDROM directory is mounted, and that the files MeshManager.X.Y.Z.jar and meshmanagerinstall.sh are present on the CD
\$ cd /mnt/cdrom/Software	Change directories to the mounted CDROM directory.
\$ sh meshmanagerinstall.sh	Run the install script. This will display a window allowing you to specify the installation configuration and may take several minutes to complete. A summary of the installation actions will be printed to the terminal, verify that there were no ERRORS.

Quick Start Installation Guide for MeshManager – Continued

The MeshManager installer allows you to specify which MeshManager components will be active on the target platform. Only those components indicated as active by selecting the checkbox will be active, even when they have been licensed.



An initial installation of the MeshManager will operate with the DNS domain name suffix that was specified when the MiSC hardware platform was staged. The default DNS domain name suffix that the MiSC DHCP server is configured to operate with is meshnetworks.net. If you want to change the default domain suffix, the MeshManager installation provides a **changedomain** utility that changes the domain name and reconfigures the DHCP and DNS servers. The *changedomain* utility is described in the **Command Line Utilities** section of Chapter 5 of the **MeshManager Users Guide**.



CAUTION

If you choose to change the default DNS domain suffix using the `changedomain` utility, the change must be completed before deploying devices on the network (i.e. before there are active leases issued by the DHCP server).

License Keys

All MeshManager applications depend on licensing. The MeshManager distribution archive does not include a license key. The license key is delivered on the License Key CD. The license key string must be placed in the following file:

```
/opt/MiSM/LicenseManager/lmkey/meammkey
```

Quick Start Installation Guide for MeshManager – Continued

Application Execution

Under normal operation, the MeshManager servers are started automatically when the operating system boots up. The commands required for manually starting and stopping the servers and GUIs are included in the following table.

Server or GUI	Command
MeshManager Servers	<i>To start all licensed servers:</i> <code>/opt/MiSM/bin/mmctl start</code>
	<i>To stop all licensed servers:</i> <code>/opt/MiSM/bin/mmctl stop</code>
	<i>To check status of licensed servers:</i> <code>/opt/MiSM/bin/mmctl status</code>
<hr/>	
Device Manager GUI	<i>To start the GUI:</i> <code>/opt/MiSM/bin/startDEVMAN</code>
<hr/>	
Event Processor Server	<i>To start the server:</i> <code>/opt/MiSM/EventProcessor/util/epctl.sh start</code>
	<i>To stop the server:</i> <code>/opt/MiSM/EventProcessor/util/epctl.sh stop</code>
<hr/>	
Hardware Authentication Server (HAS)	<i>To start the server:</i> <code>/opt/MiSM/HAS/hasctl.sh start</code>
	<i>To stop the server:</i> <code>/opt/MiSM/HAS/hasctl.sh stop</code>
<hr/>	
Network Management Information	<i>To start the server:</i> <code>/opt/MiSM/NMI/util/nmictl.sh start</code>
	<i>To stop the server:</i> <code>/opt/MiSM/NMI/util/nmictl.sh stop</code>
<hr/>	
Software Process Manager (SPM)	<i>To start the server:</i> <code>/opt/MiSM/SPM/util/spmctl.sh start</code>
	<i>To stop the server:</i> <code>/opt/MiSM/SPM/util/spmctl.sh stop</code>

Quick Start Installation Guide for MeshManager – Continued

Server or GUI	Command
	<i>To start the GUI:</i> <code>/opt/MiSM/bin/startSPMGUI</code>
Rollback MeshManager To A Previous Version	<code>/opt/MiSM/bin/rollbackmism.sh</code>
Completely Uninstall MeshManager	<code>/opt/MiSM/bin/uninstallmism.sh</code>